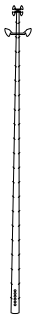




Finding the one that's just right.

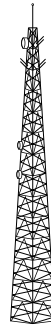
The type of tower we build depends on the project and the space. Each project is different, and we'll decide which tower is best for your land.



Monopoles

Sleek, single pole tube towers that resemble streetlights.

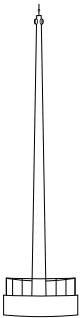
- Smaller
- Faster to build
- Sturdy in high winds
- Land space needed: 4 sq. ft.



Self-Supporting Tower

Free-standing lattice tower with three to four sides.

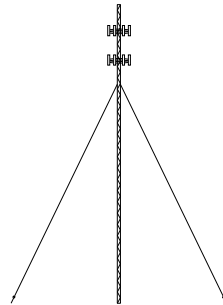
- Services multiple tenants
- Easy to service
- Land space needed: 30 sq. ft.



Ballasted Monopoles

Similar to a monopole, but with the addition of a ballasted foundation.

- Unobtrusive design
- Non-invasive
- Semi-portable
- Land space needed: 30-foot diameter



Guyed Tower

Narrow latticed structure held upright with wires anchored into the ground.

- Perfect for heavy loads
- Large site area needed