



Digital Transport Adapter



- Installation
- User information

IMPORTANT SAFETY INSTRUCTIONS

Before you install or use the apparatus, you must read and understand these Important Safety Instructions. At all times when using the apparatus you must follow these Important Safety Instructions to reduce the risk of fire, electrical shock and injury to persons.

1. Read these instructions.
2. Keep these instructions.
3. Heed all warnings.
4. Follow all instructions.
5. Do not use this apparatus near water.
6. Clean only with dry cloth.
7. Do not block any ventilation openings. Install in accordance with the manufacturer's instructions.
8. Do not install near any heat sources such as radiators, heat registers, stoves, or other apparatus (including amplifiers) that produce heat.
9. Do not defeat the safety purpose of the polarized or grounding-type plug. A polarized plug has two blades with one wider than the other. A grounding type plug has two blades and a third grounding prong. The wide blade or the third prong are provided for your safety. If the provided plug does not fit into your outlet, consult an electrician for replacement of the obsolete outlet.
10. Protect the power cord from being walked on or pinched particularly at plugs, convenience receptacles, and the point where they exit from the apparatus.
11. Only use attachments/accessories specified by the manufacturer.
12. Use only with the cart, stand, tripod, bracket, or table specified by the manufacturer, or sold with the apparatus. When a cart is used, use caution when moving the cart/apparatus combination to avoid injury from tip-over.
13. Unplug this apparatus during lightning storms or when unused for long periods of time.
14. Refer all servicing to qualified service personnel. Servicing is required when the apparatus has been damaged in any way, such as power-supply cord or plug is damaged, liquid has been spilled or objects have fallen into the apparatus, the apparatus has been exposed to rain or moisture, does not operate normally, or has been dropped.



SAFETY INFORMATION

To ensure you use this product safely, please read all the safety information included in this document.

This digital adapter has been manufactured and tested with your safety in mind. However, improper use can result in potential electric shock or fire hazards. To avoid defeating the safeguards that have been built into your digital adapter, please observe the precautions discussed in this document.

The model number, serial number and electrical rating of your digital adapter are on a label on its base.

Warnings

- **Do not remove the cover of your digital adapter. There are no user-serviceable parts inside it.**
- **Do not perform any servicing unless you are qualified to do so by Pace. Refer all servicing to qualified service personnel. Servicing the digital adapter yourself will invalidate the warranty.**
- **On the rear panel of your digital adapter there is a tamper-evident label that states “Warranty void if broken or removed”.**
- **To reduce the risk of fire or electric shock, do not expose your digital adapter to rain or moisture.**

OTHER WARNINGS

Risk of fire or scorching

Never place naked flame sources, such as lighted candles, on or adjacent to your digital adapter.

Ambient temperature

The operating temperature range of your digital adapter is 32-104°F. If the ambient temperature around your digital adapter falls outside this range, you must correct this in order for your digital adapter to work correctly and safely. For example, if the temperature is too high, switch on the air conditioning.

Ventilation

Slots and openings in the casing of your digital adapter are provided for ventilation, to ensure reliable operation of your digital adapter and to protect it from overheating.

- Never block the ventilation openings by placing your digital adapter on a bed, sofa, rug or other similar surface.
- Never cover the ventilation openings with items such as newspapers, table-cloths or curtains.

CAUTION

Do not attempt to modify your digital adapter without written authorization from the manufacturer. Unauthorized modification could void your authority to operate your digital adapter.

**SAVE THIS INFORMATION FOR FUTURE
REFERENCE**

REGULATORY INFORMATION

NOTE

Your digital adapter has been tested and found to comply with the limits for a Class B digital device, pursuant to Part 15 of the FCC Rules. These limits are designed to provide reasonable protection against harmful interference in a residential installation. Your digital adapter generates, uses and can radiate radio-frequency energy and, if not installed and used in accordance with the instructions, may cause harmful interference to radio communications.

However, there is no guarantee that interference will not occur in a particular installation. If your digital adapter does cause harmful interference to radio or television reception, which can be determined by turning your digital adapter off and on, you are encouraged to try to correct the interference by one or more of the following measures:

- Reorient or relocate the receiving antenna.
- Increase the separation between your digital adapter and the receiver.
- Connect your digital adapter to an outlet on a circuit different from that to which the receiver is connected.
- Consult your dealer or an experienced radio/TV technician for help.

CONNECTING TO THE AC POWER SUPPLY

You must not plug your digital adapter into the power supply until you have connected your digital adapter to the other equipment in your system.

Your digital adapter itself is designed for use only with the supplied power supply unit.

On the power supply unit there is a label that specifies the correct AC power supply input for it. Do not connect the power supply unit to any supply other than this.

Always connect the 6 volt DC cord from the power supply unit to your digital adapter before you insert the power supply unit into the wall AC outlet.

To disconnect power from your digital adapter, always remove the power supply unit from the wall AC outlet (i.e. not by removing the 6 volt cord from your digital adapter).

Therefore you must install your digital adapter near to the wall AC outlet, which should be easily accessible.

If you are in any doubt about the power supply lead, its plug or its connection, consult a qualified electrician.

WELCOME

Introducing the Pace Digital Transport Adapter (DTA)

Enclosed you will find your new Pace digital adapter.

This device allows you to receive your channels in full digital format, which improves both the overall sound and picture quality.

You should connect your digital adapter to any television that has cable service connected but does not have a digital cable box.

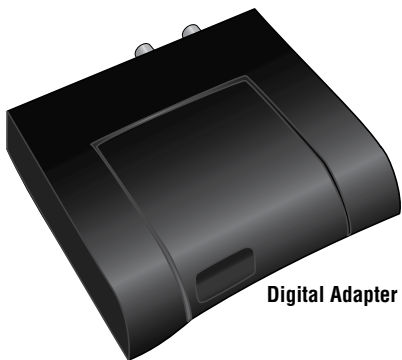
Televisions that already have a digital cable box installed do not require a digital adapter.

By following the instructions in this guide, you will be able to install your digital adapter with relative ease.

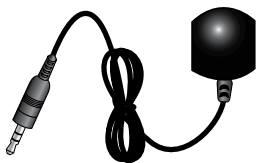
BEFORE YOU BEGIN

- Read all the safety information in this guide (above).
- Check you have all the things you need (see 'What's in the box?').
- Familiarize yourself with the front and rear panels of your digital adapter (see 'About your Digital adapter').
- Before connecting any cables, choose a suitable position for your digital adapter, observing the ventilation requirements set out in the safety information above.
- Follow the instructions overleaf to install your digital adapter correctly. Remember, you will need access to a working electrical outlet.
- You may want to secure your digital adapter with the enclosed adhesive fasteners. However, be careful that the adhesive doesn't damage the surface to which you are attaching the fastener, as your cable company will not be responsible for any damage.
- Any problems? Consult the 'Solving Problems' table overleaf.

WHAT'S IN THE BOX?



Digital Adapter

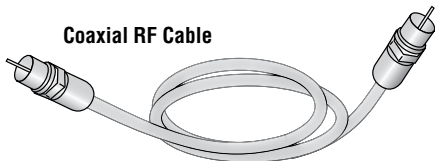


Remote Eye (IR Receiver)

Adhesive Fasteners



Coaxial RF Cable



Remote Control



**AA Batteries
(for your remote control)**



External Power Supply Unit

ABOUT YOUR DIGITAL ADAPTER

POWER LED

Lights green when your digital adapter is fully on



IR RECEIVER (behind screen)

Receives infra-red signals from your remote control*

CABLE IN

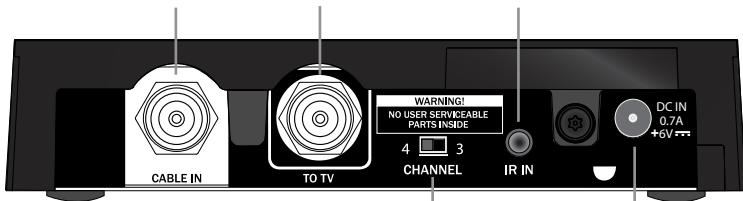
From cable service provider

TO TV

RF output to the TV

IR IN

Infra-red input from the optional remote eye



WARNING!
NO USER SERVICEABLE
PARTS INSIDE

4 3
CHANNEL

DC IN
0.7A
+6V

CHANNEL 3/4

Switch for tuning your digital adapter

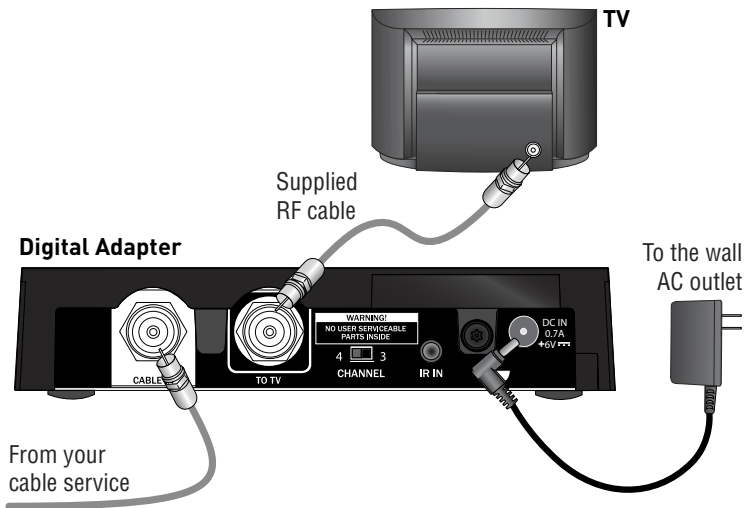
POWER INPUT

Make this connection last of all

* If you place your digital adapter out of sight (e.g. behind the TV) you will need to use the remote eye so your adapter can receive signals from the remote control. Refer to the installation instructions overleaf.

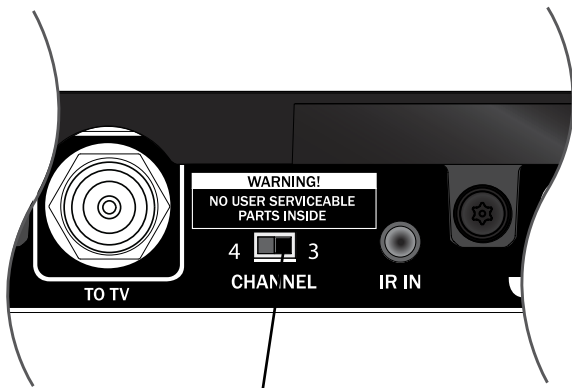
1. CONNECTING THE CABLES

1. Connect the RF cable from the cable service to the connector marked **CABLE IN** on your digital adapter.
2. Connect the supplied RF cable between the **TO TV** connector on your digital adapter and the ANTENNA IN/RF IN connector on your TV, as shown below.
3. Connect the external power supply unit (supplied) to the connector marked **DC IN** on your digital adapter, as shown below.
4. After you have made the connections between your digital adapter and your TV, connect your TV and the external power supply unit to the AC power supply.



2. CHECKING THE PICTURE

1. Tune your TV to channel 3.
2. Set the switch on the back of your digital adapter to channel 3 (see below).



Set this switch to Channel 3

Note: Some parts of the country use channel 4. If you do not have a picture, you may need to switch both your TV and your digital adapter to channel 4.

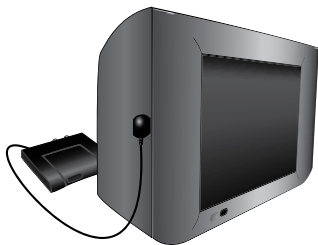
3. CONNECTING THE REMOTE EYE

If you have decided to place your digital adapter out of sight (e.g. behind the TV), you will need to use the supplied remote eye to receive signals from the remote control.

1. Connect the lead from the remote eye to the **IR IN** connector on the rear panel of your digital adapter, as shown right.



2. Use the adhesive tape on the remote eye to attach the remote eye to the top or side of your TV, ensuring that it is in sight of the remote control (see right).



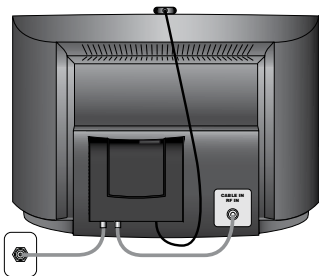
4. PLACING THE DIGITAL ADAPTER

After you have made the connections between the cable service, your digital adapter and your TV, place your digital adapter in a suitable location, observing the ventilation requirements set out in the safety information overleaf.

- You can place your digital adapter on top of your TV, see right.



- Or, you can use the adhesive fasteners (supplied) to attach your digital adapter to the side or back of your TV (see right for an example).



5. USING THE REMOTE CONTROL

After you install your digital adapter, the only way to change channels is with the supplied remote control.

If you need further help, for example to program the remote control to operate your TV, refer to the instructions supplied with the remote control.

6. ENJOY DIGITAL TV!

Following Installation

If you have followed the steps and have picture and sound, congratulations, you have successfully installed your Pace digital adapter.


If you are experiencing problems, please consult the “Solving Problems” guide located to the right.

Note: If your digital adapter requires activation, contact your cable company.

Enjoy viewing all of your favorite TV shows, movies and sports games with digital picture and sound.



Manufactured under license from Dolby Laboratories. Dolby and the double-D symbol are trademarks of Dolby Laboratories.

Pace and  are trademarks and/or registered trademarks of Pace plc.
www.pace.com

Copyright © 2009 Pace plc. All rights reserved.

SOLVING PROBLEMS

If the installed system does not seem to be working properly, *first make sure that all the cables are securely connected*, then carry out the following checks, in the order shown.

Problem	Suggested solution	Further checks, if there is still a problem
There is nothing illuminated on your digital adapter's front panel.	Power may not be reaching your digital adapter. Make sure that the external power supply unit is properly plugged in. If there is a switch by the wall AC power outlet, switch it to ON.	Check that the wall AC power outlet is working (for example by plugging in a lamp).
The remote control does not operate your digital adapter.	Check that nothing is blocking the path from your remote control to the front panel or remote eye. If you are using the remote eye, make sure it is securely connected to your digital adapter.	Check that your remote control is currently set to operate your digital adapter (consult the instructions supplied with your remote control). If your remote control will still not operate your digital adapter, replace the batteries in your remote control.
There is no picture on your TV screen.	Your TV and other equipment may not be turned on. Check that they are plugged into AC power outlets and turned on. Make sure that the TV and digital adapter are both set to the <i>same</i> channel (3 or 4).	Check that you have selected the appropriate video input on your TV. If the video path between your digital adapter and your TV loops through other equipment (such as a VCR) you may need to turn on this equipment. Try switching the TV and digital adapter to the other channel (3 or 4)
There is no sound.	Check that any audio cables between your TV and any attached audio equipment are securely and correctly connected.	Check that you have not muted the sound on your TV and/or any attached audio equipment. Adjust the volume control on your TV. If you can hear only mono sound, first check that the program is likely to have stereo sound (an old movie, for example, may not be in stereo).

If you are still having problems **contact your cable company**, or for additional support visit **www.pace.com/dta**